

State of Wyoming Corner Record

(In compliance with the **CORNER PERPETUATION AND FILING ACT**, Wyoming Statutes, 1997 Section 33-29-140 et. seq., and the Rules and Regulations of the Board of Professional Engineers and Professional Land Surveyors)

Reverse side of this form may be used if more space is needed.

Record of original survey and citation of source of historical information (if corner is lost or obliterated). Description of corner monumentation evidence found and/or monument and accessories established to perpetuate the location of this corner. Sketch of relative location of monument, accessories, and reference points with course and distance to adjacent corner(s) (if determined in this survey). Method and rationale for reestablishment of lost or obliterated corner.

RECORD OF ORIGINAL SURVEY AND SUBSEQUENT HISTORY: Date of Survey: 1870 Surveyor: John B. Thomas

Set a Granite Boulder 20x10x8 for corner to Secs 13-14-23-24.

INSTRUMENT NUMBERS OF RECORDS PREVIOUSLY RECORDED OR FILING DATA:

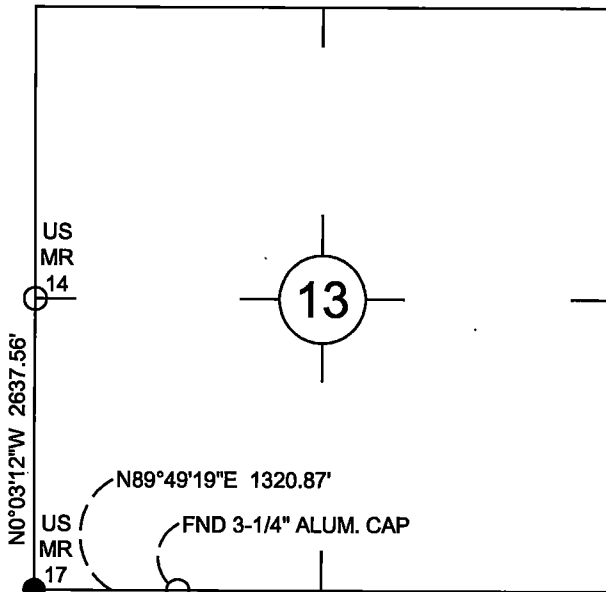
Record: 1993 Surveyor: Paul Reid

Fnd. 2" brass cap in concrete marked "PELS 538 T14N S14 S13 S23 S24 R66W 1962"

DESCRIPTION OF CORNER EVIDENCE FOUND:

Dug a large hole several feet deep and found no evidence of the 1962 monument. At the proportionate distance from the Paul Reid survey set a 2-1/2" aluminum cap on 3/4" x 30" rebar marked as shown.

Monument location

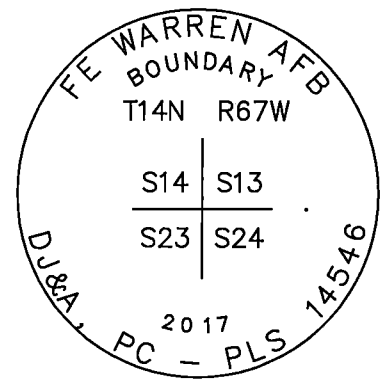


Date of Field Work: 10/20/17

Office Reference: —

NAD 83(2011) coordinates for this corner:
 Latitude = N41°10'29.726" Longitude = W104°50'51.869"
 NOTE: These coordinates are to be used as a search tool only.

Monument Inscription



BASIS OF BEARING: WYOMING STATE PLANE EAST ZONE GRID NORTH.

Cross Index Plat

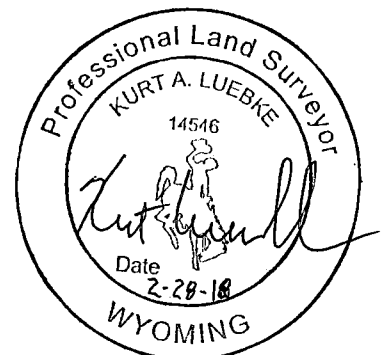
1	2	3	4	5	6	7	8	9	10	11	12	13	14	15	16	17	18	19	20	21	22	23	24	25
A	+	+	+	+	+	+	+	+	+	+	+	+	+	+	+	+	+	+	+	+	+	+	+	+
B	+	+	+	+	+	+	+	+	+	+	+	+	+	+	+	+	+	+	+	+	+	+	+	+
C	6	5	4	3	2	1																		
D	+	+	+	+	+	+	+	+	+	+	+	+	+	+	+	+	+	+	+	+	+	+	+	+
E	+	+	+	+	+	+	+	+	+	+	+	+	+	+	+	+	+	+	+	+	+	+	+	+
F	+	+	+	+	+	+	+	+	+	+	+	+	+	+	+	+	+	+	+	+	+	+	+	+
G	7	8	9	10	11	12																		
H	+	+	+	+	+	+	+	+	+	+	+	+	+	+	+	+	+	+	+	+	+	+	+	+
J	+	+	+	+	+	+	+	+	+	+	+	+	+	+	+	+	+	+	+	+	+	+	+	+
K	+	+	+	+	+	+	+	+	+	+	+	+	+	+	+	+	+	+	+	+	+	+	+	+
L	18	17	16	15	14	13																		
M	+	+	+	+	+	+	+	+	+	+	+	+	+	+	+	+	+	+	+	+	+	+	+	+
N	+	+	+	+	+	+	+	+	+	+	+	+	+	+	+	+	+	+	+	+	+	+	+	+
O	+	+	+	+	+	+	+	+	+	+	+	+	+	+	+	+	+	+	+	+	+	+	+	+
P	19	20	21	22	23	24																		
Q	+	+	+	+	+	+	+	+	+	+	+	+	+	+	+	+	+	+	+	+	+	+	+	+
R	+	+	+	+	+	+	+	+	+	+	+	+	+	+	+	+	+	+	+	+	+	+	+	+
S	+	+	+	+	+	+	+	+	+	+	+	+	+	+	+	+	+	+	+	+	+	+	+	+
T	30	29	28	27	26	25																		
U	+	+	+	+	+	+	+	+	+	+	+	+	+	+	+	+	+	+	+	+	+	+	+	+
V	+	+	+	+	+	+	+	+	+	+	+	+	+	+	+	+	+	+	+	+	+	+	+	+
W	+	+	+	+	+	+	+	+	+	+	+	+	+	+	+	+	+	+	+	+	+	+	+	+
X	31	32	33	34	35	36																		
Y	+	+	+	+	+	+	+	+	+	+	+	+	+	+	+	+	+	+	+	+	+	+	+	+
Z	+	+	+	+	+	+	+	+	+	+	+	+	+	+	+	+	+	+	+	+	+	+	+	+
1	2	3	4	5	6	7	8	9	10	11	12	13	14	15	16	17	18	19	20	21	22	23	24	25

Firm/Agency, Address

KURT LUEBKE, PLS 14546
D.J.&A. P.C.
3203 RUSSELL ST
MISSOULA, MT 59801
 Phone Number: 406-721-4320

This corner record was prepared by me or under my direction and supervision.

SEAL & SIGNATURE



RECP #: 726311
 RECORDED 3/5/2018 AT 10:31 AM BK# 2577 PG# 152
 Debra K. Lee, CLERK OF LARAMIE COUNTY, WY PAGE 1 OF 1

Corner Name Southwest Corner Section 13, T 14 N, R 67 W, 6th P.M.

Cross-Index No.: N-21

County: Laramie Wyoming

SBRPEPLS/PLSW: March 1994; PLSW January 1998